



To register, visit  
[tritechtraining.com](http://tritechtraining.com)  
or contact our  
Training Director  
Phil Sanfilippo at  
800.438.7884 ext.  
1025 or by email at  
[phil@tritechusa.com](mailto:phil@tritechusa.com).



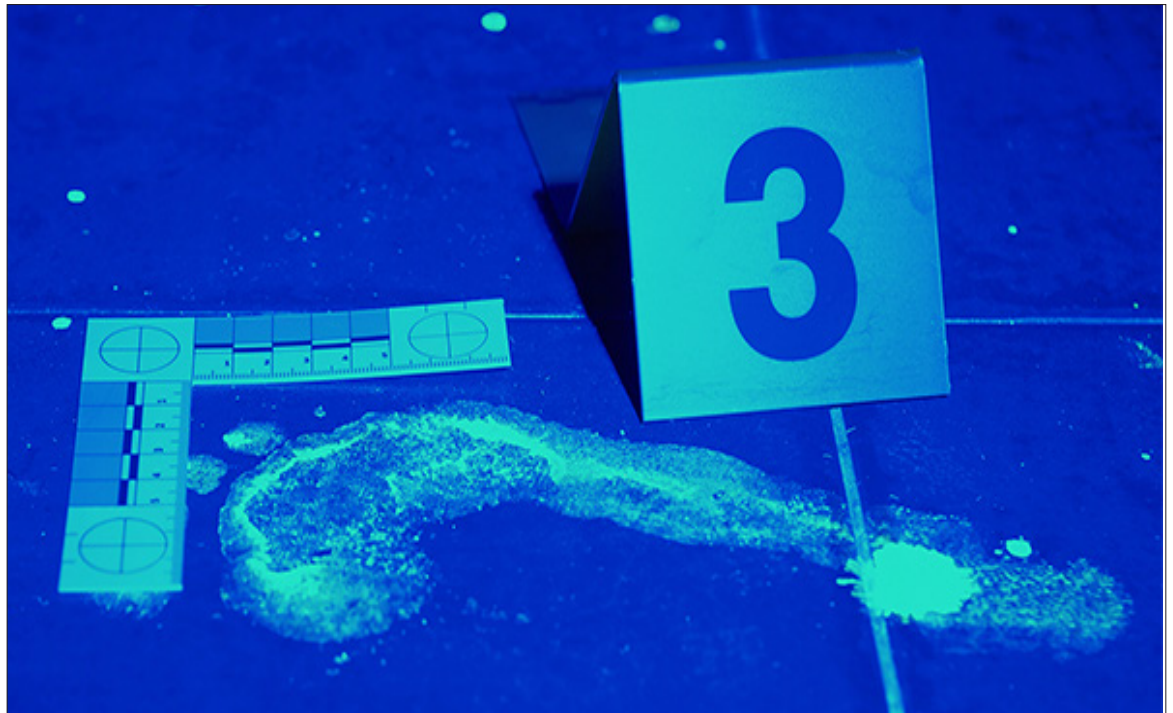
Courses are presented  
in partnership with  
the International  
Association for  
Identification.

#### ADA / Special Accommodations

To ensure we can  
accommodate persons  
with special needs  
who wish to attend  
our courses, please  
be sure to identify  
the accommodation  
needed when  
you register, or if  
applicable, at the time  
you register by phone.

#### Host a course

By hosting one of our  
courses, you will be  
providing your agency's  
personnel and the  
forensic professionals  
in your area with a  
high-quality training  
opportunity, right in  
your local area. This  
means less cost to  
you or your agency  
for expenses such as  
travel, lodging, and  
meals, and less time  
away from home and  
family. Plus, hosts  
can qualify for tuition  
savings. For more  
information, visit  
[tritechtraining.com](http://tritechtraining.com).



# Detection and Enhancement of Bloodstain Evidence

**Instructor: Nikki Wagar**

**March 9-11, 2020 | 8 am - 5 pm**

**Tuition: \$419**

#### Location:

Anoka County Sheriff's Office Training Center  
13301 Hanson Boulevard, NW | Andover, MN 55304

#### Lodging Information:

AmericInn of Coon Rapids  
3430 Northdale Boulevard, NM | Coon Rapids, MN 55448  
(763) 323-0010

**Room Rate:** \$89.99 per night plus tax (single/double occupancy)

**Booking Info:** Please call the hotel and mention the Anoka County Sheriff's training to receive the special rate. Block expires 30 days in advance of the course.



To register, visit [tritechtraining.com](http://tritechtraining.com) or contact our Training Director Phil Sanfilippo at 800.438.7884 ext. 1025 or by email at [phil@tritechusa.com](mailto:phil@tritechusa.com).

## ABOUT TRITECH

A leader in the forensics market, Tri-Tech Forensics provides evidence collection and crime scene investigation products and training to crime labs and crime scene investigators throughout the world. With over 30 years of experience, we are the nation's most proficient developer and manufacturer of forensic kits. We are committed to providing our customers with state-of-the-art forensics products and services at affordable prices. It is our goal, through our research and development program, to continue to develop superior products and training to aid in all aspects of crime scene investigation and crime lab analysis. We know how important our products and training are to the forensics community, from investigation to prosecution. Our mission is the same as our customers – *Identify. Protect. Preserve.*

## COURSE DESCRIPTION

# Detection and Enhancement of Bloodstain Evidence

Crime scenes involving bloodshed are often complex environments with vast opportunities to locate and preserve valuable evidence.

This three-day course is designed to provide crime scene investigators or laboratory personnel with the tools necessary to detect, enhance, and document blood evidence. Some crime scenes will present apparent blood evidence, while other crime scenes may be more complex and require search or enhancement techniques. Various chemical presumptive and enhancement techniques must be employed at crime scenes involving bloodshed to ensure thorough investigations are performed.

Course instruction will cover bloodstain detection, documentation, and preservation methods. Bloodstain search techniques will be employed to locate latent bloodstains within crime scenes and on items of potential evidentiary significance. Students will be introduced to various presumptive blood testing techniques as well as specialized chemical processing utilized to locate minute or

cleaned up bloodstains. Friction ridge and footwear impressions deposited in blood are additional forms of evidence frequently located within bloody crime scenes. Sequential processing with multiple blood enhancement techniques will be employed to establish methods to develop impressions deposited in blood and capture comparison quality photographs to allow for future examinations. Practical exercises will be utilized throughout the course to enhance the learning experience.

Chemicals used in this course include, but are not limited to the following:

- Leucocrystal Violet (LCV)
- Amido Black
- Bluestar® Forensic
- Phenolphthalein
- Hungarian Red
- Ninhydrin
- Acid Yellow 7

## COURSE INSTRUCTOR

### NIKKI WAGAR, CCSA, CLPE



Nikki Wagar is a latent print examiner and crime scene analyst with experience in photography, biometric database testing, complex latent print examinations, conflict resolution, bloodstain pattern analysis, processing of major crime scenes, and forensic anthropology. She is a Certified Latent Print Examiner and Certified Crime Scene Analyst through the International Association for Identification (IAI) and has been practicing both specialties for over 12 years. She began her career with the California Department of Justice, Bureau of Forensic Services and continued her presence in forensic science as a Forensic Analyst working for the Washington County Sheriff's Office in Oregon. She has a master's degree in Forensic Science, a bachelor's degree in Physical Anthropology, and a certificate in Forensic Identification.

Her training experience includes locating and recovering buried bodies, latent print comparison and processing techniques, latent print examination and analysis processes, and crime scene processing.

Locally, Nikki is the Vice President of the Pacific Northwest Division of the IAI. She has professional affiliations with the IAI and the International Association of Bloodstain Pattern Analysts (IABPA), as well as being a member of the Northwest Regional Response Team, a group of professionals trained in mass disaster response.